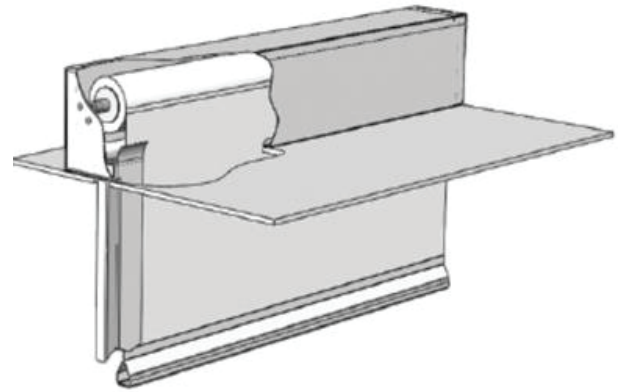




GENERAL DESCRIPTION:

The HOSE STREAM 120® is a deployable fabric fire shutter system composed of a wired reinforced fabric curtain on a round steel tube in a fire rated assembly. The curtain remains retracted above the finished ceiling until activated by fire alarm or smoke alarm at which point it descends at 6 in/sec. and creates a smoke and fire barrier. The curtain can also be non-motorized when activated by a fusible link. The system consists of:

- A single roller assembly with a 0.05 in. thick galvanized steel head box with a minimum 9 in. x 9 in. dimension. Maximum span up to 146 ft. and drop height of 20 ft.
- A motor control circuit (MCC) is housed in a steel enclosure and mounted onto the motor end of the head box. NFPA 70 compliant DC motor interfaced with Control Panel (CP) and a suitably weighted bottom bar. Internal or external motor depending on length.
- Removable fire rated cover plates incorporated to allow access to curtain roller.
- Curtain passes through fire rated galvanized steel auxiliary rails (side guides) that can be powder coated or prime coated in finish.
- Egress switches on both sides of curtain.
- Tested at Guardian Fire Testing Laboratories.
Accreditation
ISO 17025 (testing)
ISO 17020 (inspection)
ISO 17065 (production certification)



STANDARDS:

The HOSE STREAM 120® is certified for quality by ISO 9000, meets and exceeds the requirements of:

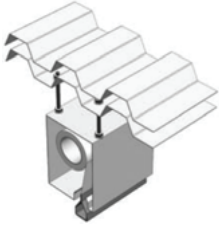
- Tested in accordance to UL 10 B and ASTM E2226 (Hose Stream)
- NFPA 105 Compliance
- NFPA 252 Compliance

PERFORMANCE:

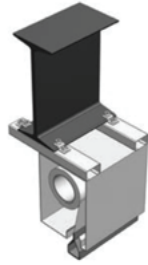
- 2 hour fire rated at 1800 F
- Curtain deploys at 6 inches to 24 inches per second per NFPA 80
- For openings in a 2 hour wall
- Hose Stream tested
- UL 10B and ASTM E2226 (Hose Stream)
- Two Hose Stream 120 systems installed back to back will achieve 3 hour fire rating based on "harmathy's rule". For example, NFPA 221 table 4.5 States that two 1-hour walls are equivalent to a single 2-hour wall

HEADBOX INSTALLATION OPTIONS

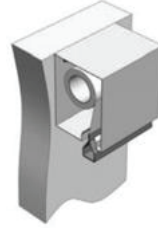
There are many installation options that suit all types of ceiling configurations and provide a broad array of flexibility.



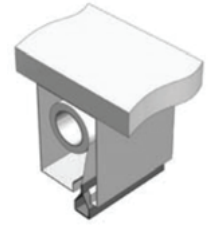
Unistrut Installation



I Beam

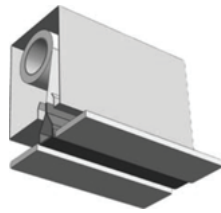


Back Mounted



Top Mounted

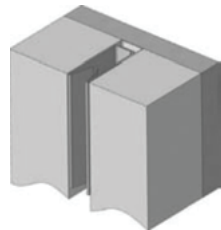
FINISHED CEILING OPTIONS



Shadow Gap

SIDE GUIDE CONFIGURATION

The side guide is recessed flush as shown below:



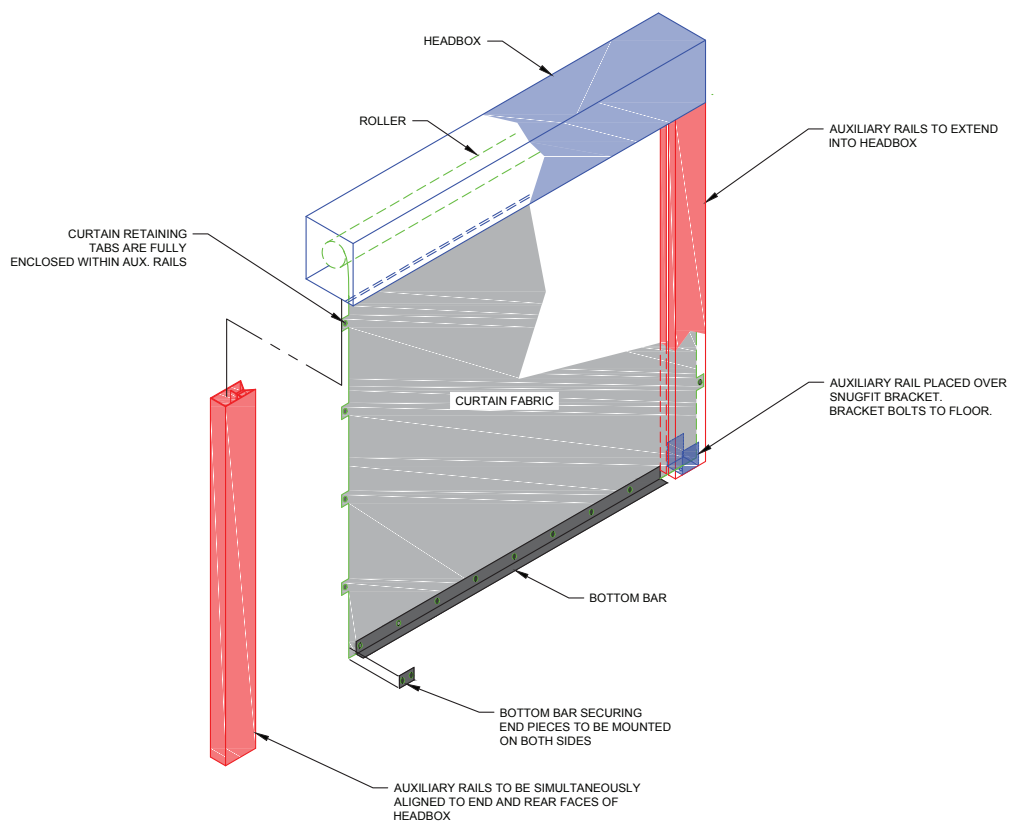
Flush

CONTROL PANEL (CP):

The curtain deployment mechanism is directly synced and integrated in the fire alarm emergency systems.

When an alarm signal is detected, the CP will automatically trigger all the curtain systems to deploy in a controlled descent under gravity. In normal operating conditions the CP provides AC supply to the MCC to keep the curtains in retracted condition. Should smoke be detected, the fire alarm control system will send a signal to the Control Panel and the curtains will deploy at a controlled speed to their operational position. When the fire alarm system goes back to normal power mode, the curtains will automatically retract back to the housing.

FABRIC FIRE SHUTTER DIAGRAM



U.S. SMOKE & FIRE®

12310 Pinecrest Road, Suite 300, Reston, VA 20191 • Phone: 888.917.8777 • Fax: 888.917.8777
Washington, DC • Boston • New York • Miami • Dallas • San Francisco
www.us smoke and fire.com • aeteam@us smoke and fire.com

