



GENERAL DESCRIPTION:

The HOSE STREAM 120® is a deployable Steel-Tex fire shutter system composed of a wired reinforced Steel-Tex fire shutter on a round steel tube in a fire rated assembly. The Steel-Tex fire shutter remains retracted above the finished ceiling until activated by fire alarm or smoke alarm at which point it descends at 6 in/sec. and creates a smoke and fire barrier. The fire shutter can also be nonmotorized when activated by a fusible link for smaller openings. The system consists of:

- A single roller assembly with a 0.05 in. thick galvanized steel head box with a minimum 9 in. x 9 in. dimension. Maximum span up to 146 ft. and drop height of 20 ft.
- A motor controller (MC) is housed in a steel enclosure and mounted onto the motor end of the head box. NFPA 70 compliant DC motor interfaced with Control Panel (CP) and a suitably weighted bottom bar. Internal or external motor depending on length.
- Removable fire rated cover plates incorporated to allow access to shutter roller.
- Shutter passes through fire rated galvanized steel auxiliary rails (side guides) that are factory painted or can be repainted in the field by others.
- If required, egress switches can be provided on both sides of shutter when shutter is directly in the path of egress.
- Tested at Guardian Fire Testing Laboratories.
Accreditation
ISO 17025 (testing)
ISO 17020 (inspection)
ISO 17065 (production certification)

STANDARDS:

The HOSE STREAM 120® is certified for quality by ISO 9000, meets and exceeds the requirements of:

- Tested in accordance to UL 10B and ASTM E2226 (Hose Stream)
- NFPA 252 Compliance
- Tested to UL1784
- UL864 Releasing Device

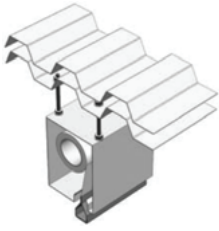
PERFORMANCE:

- 2 hour fire rated at 1800 F
- Shutter deploys at 6 inches to 24 inches per second per NFPA 80
- For openings in a 2 hour wall
- Hose Stream tested
- UL 10B and ASTM E2226 (Hose Stream)
- Two Hose Stream 120 systems installed back to back will achieve 3 hour fire rating based on "harmathy's rule". For example, NFPA 221 table 4.5 States that two 1-hour walls are equivalent to a single 2-hour wall. See Installed Back to Back Hose Stream 120 cut sheet for product information.
- Fail Safe battery backup

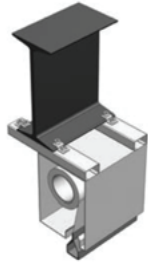


HEADBOX INSTALLATION OPTIONS

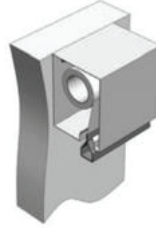
There are many installation options that suit all types of ceiling configurations and provide a broad array of flexibility.



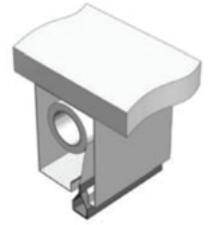
Unistrut Installation



I Beam

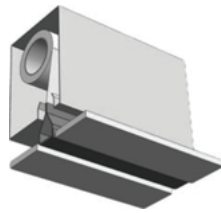


Back Mounted



Top Mounted

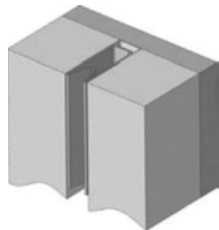
FINISHED CEILING OPTIONS



Shadow Gap

SIDE GUIDE CONFIGURATION

The side guide is recessed flush as shown below:



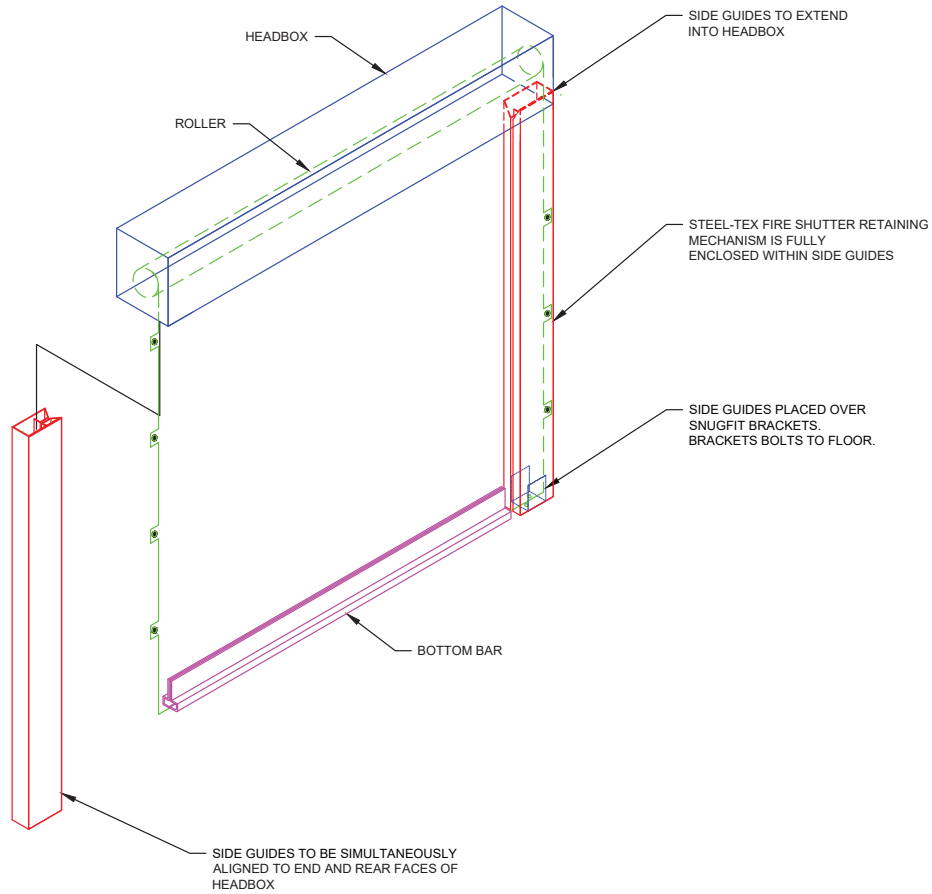
Flush

CONTROL PANEL (CP):

The Steel-tex fire shutter deployment mechanism is directly synced and integrated in the fire alarm emergency systems.

When an alarm signal is detected, the Control Panel (CP) will automatically trigger the shutter systems to deploy in a controlled descent under gravity. In normal operating conditions the CP provides AC supply to the Motor Controller (MC) to keep the shutters in retracted condition. Should smoke be detected, the fire alarm control system will send a signal to the CP and the shutters will deploy at a controlled speed to their operational position. When the fire alarm system goes back to normal power mode, the shutters will automatically retract back to the housing.

STEEL-TEX FIRE SHUTTER DIAGRAM



U.S. SMOKE & FIRE®

12310 Pinecrest Road, Suite 300, Reston, VA 20191 • Phone: 888.917.8777 • Fax: 888.917.8777
Washington, DC • Boston • New York • Miami • Dallas • San Francisco
www.us smokeandfire.com • aeteam@us smokeandfire.com

