



U.S. SMOKE & FIRE
PROTECTING THE PEOPLE®

Commissioning Manual

Models

SD60

SD60GS

SD240GS

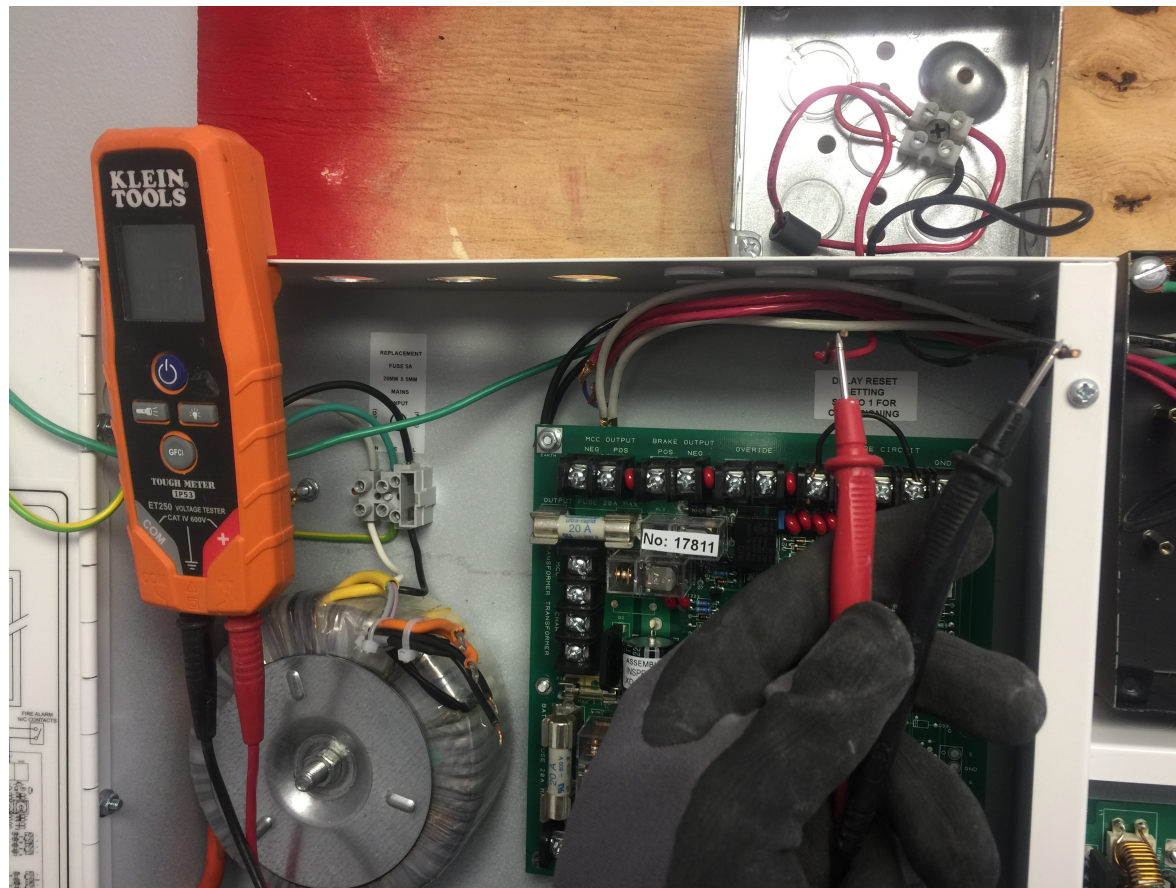
HoseStream120

HoseStream240

INSTRUCTIONS

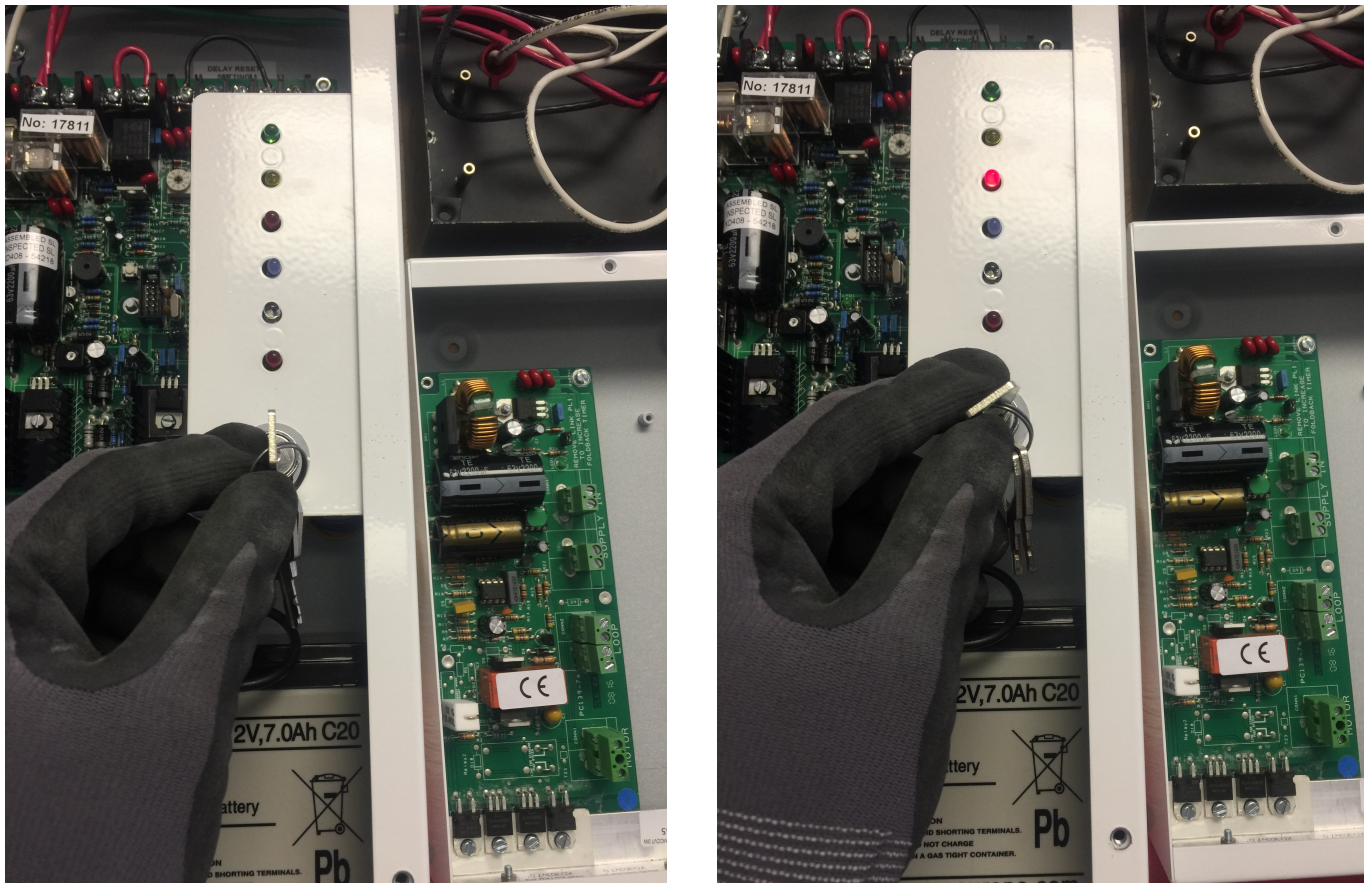
Step 1

Ask the Fire Alarm Contractor to open and close the contact and read the voltage, it must be 0.0V
If the Fire Alarm wires are charged the commissioning STOPS



Step 2

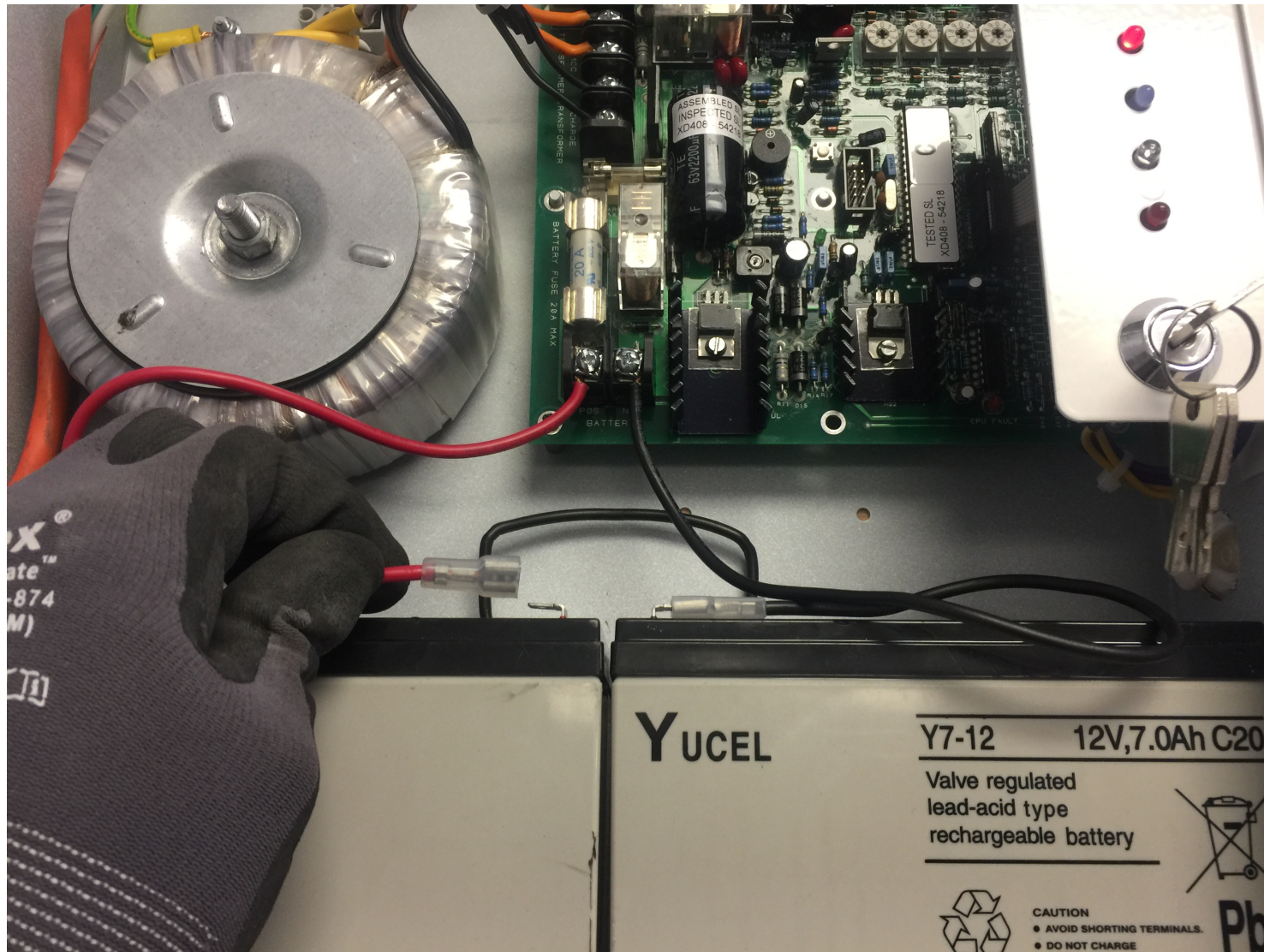
Turn the key switch from the 12 o'clock position to the 2 o'clock position and the curtain will deploy



Confirm curtain deploys and hits no obstructions

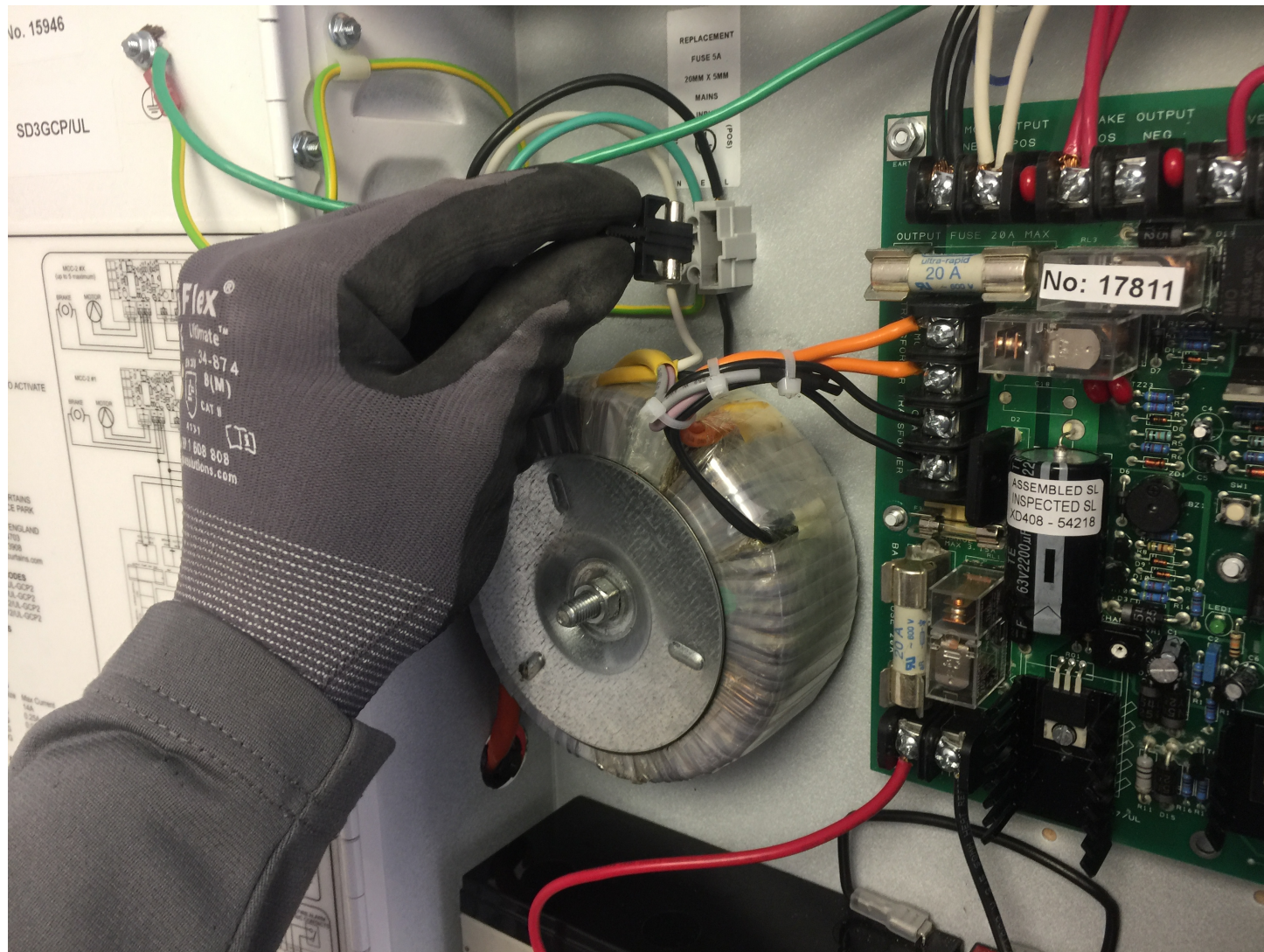
Step 3

Remove the Red Battery Lead



Step 4

Remove the Fuse



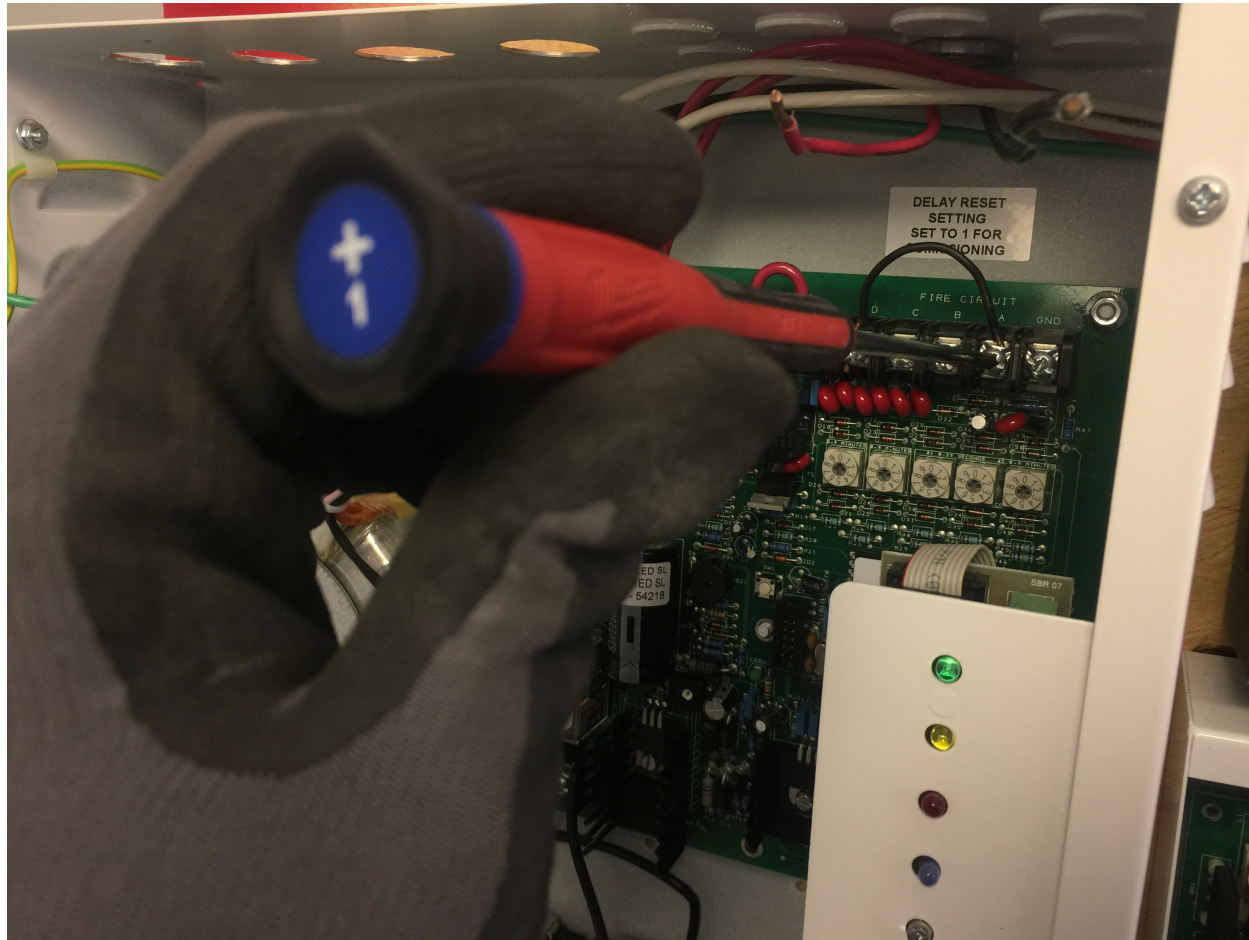
Step 5

Ground yourself by putting your hand on the wall



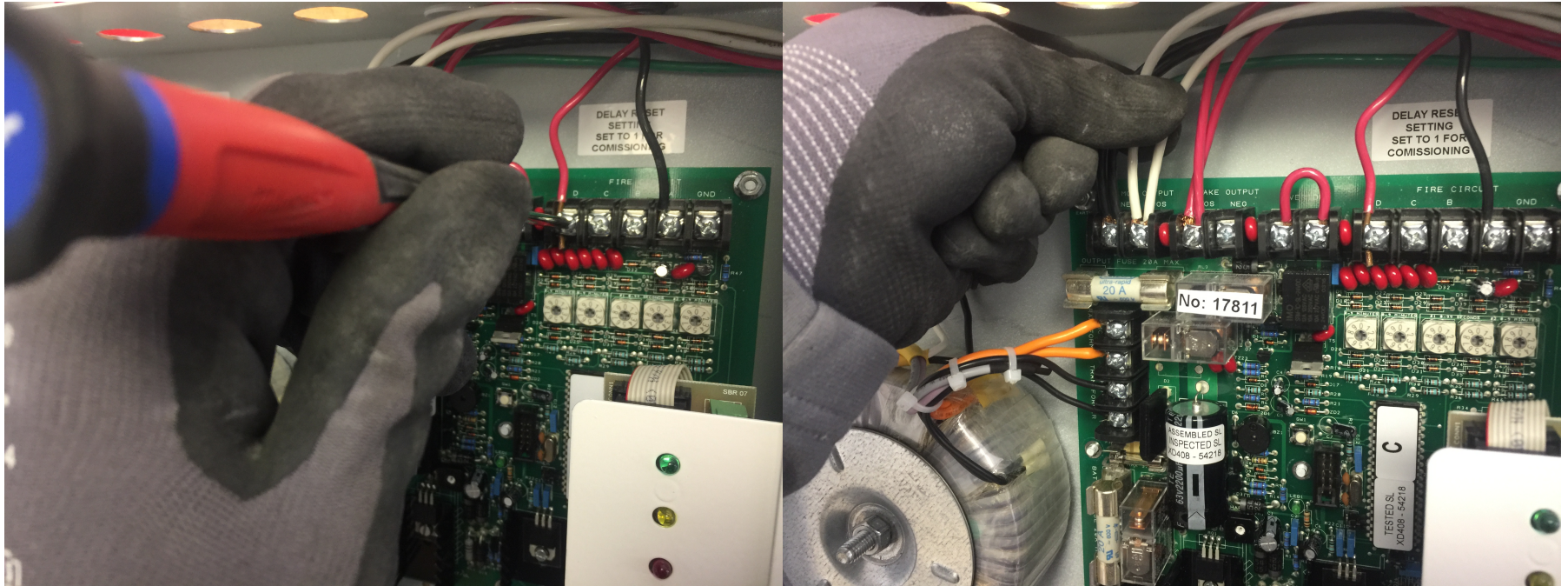
Step 6

Remove the Fire Alarm Jumper at the D and A terminals



Step 7

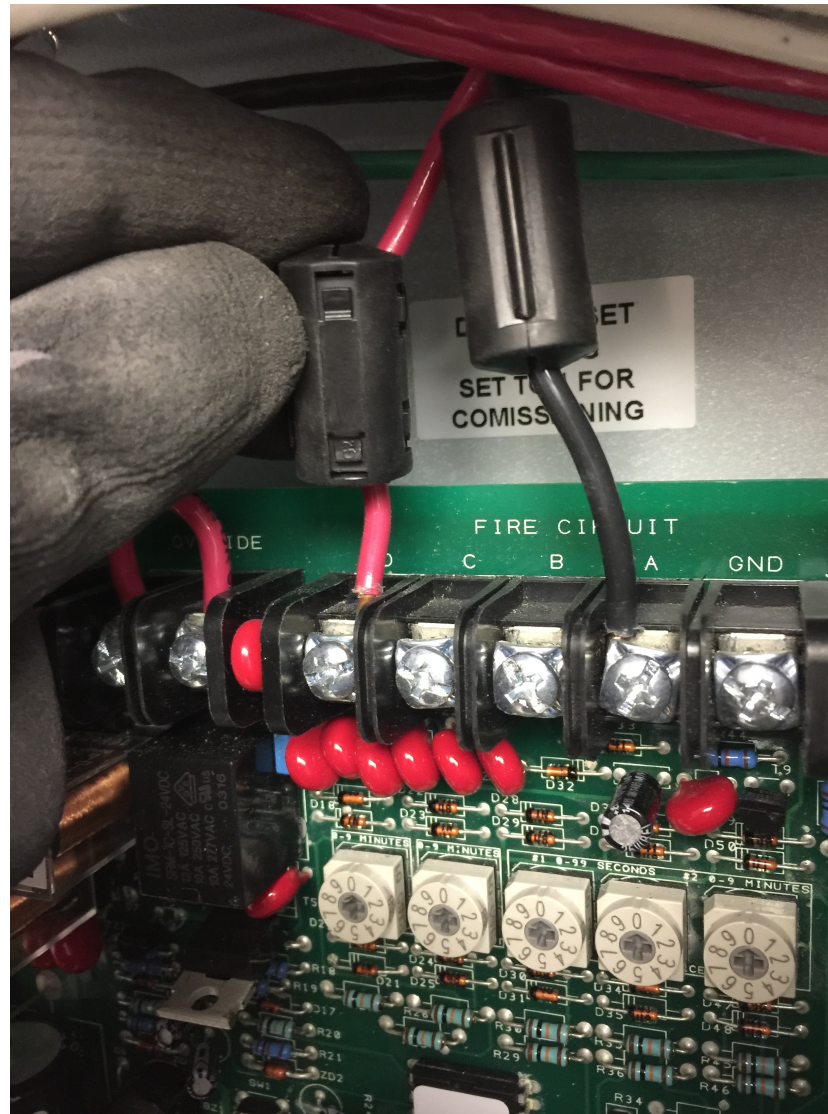
Install the normally closed dry contact at the D and A terminals once they are installed gently pull the wires to make sure they are tight



Please do not over tighten

Step 8

Install Ferrite Cores on the fire alarm wiring



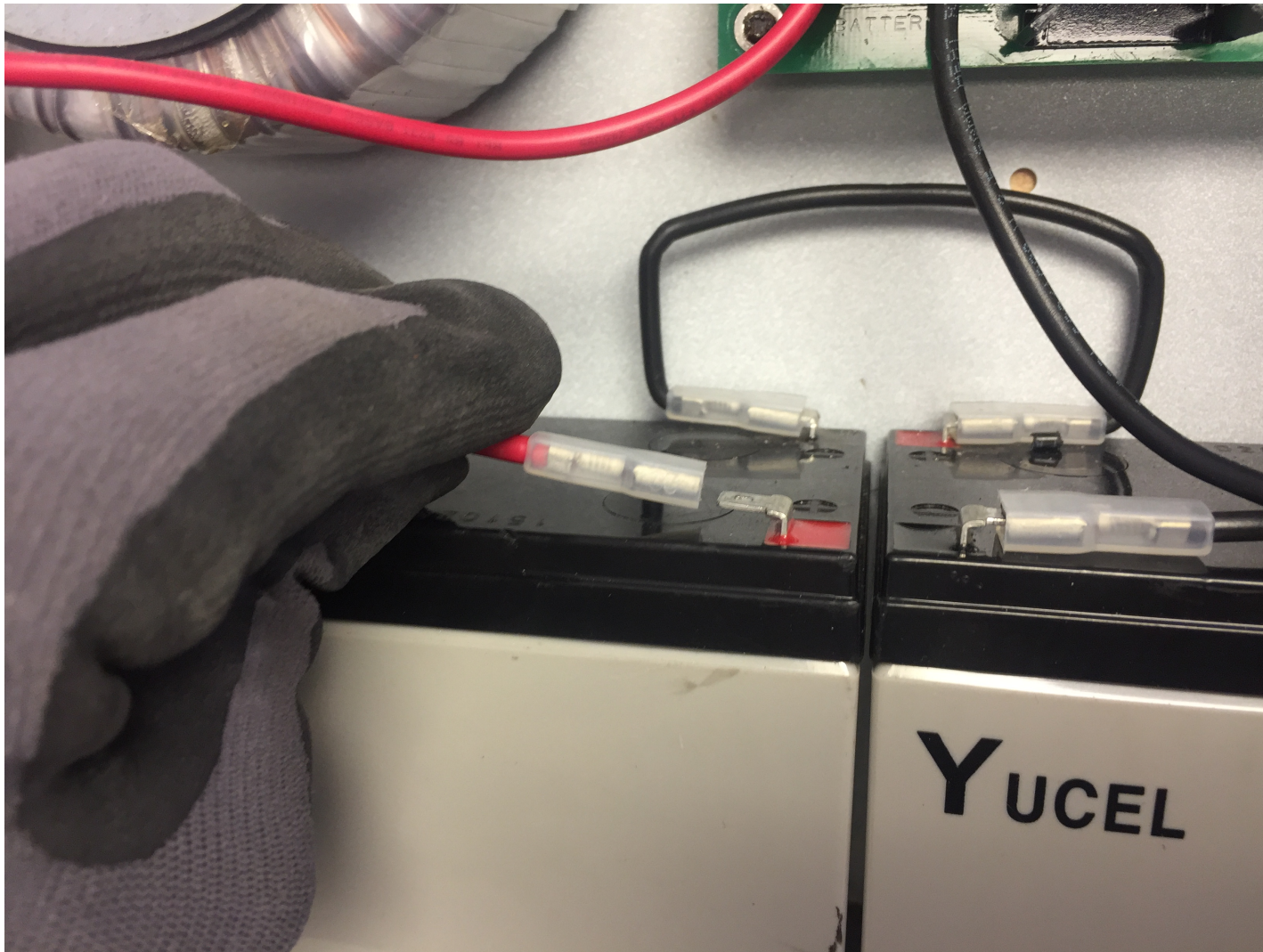
Step 9

Re Install the Fuse



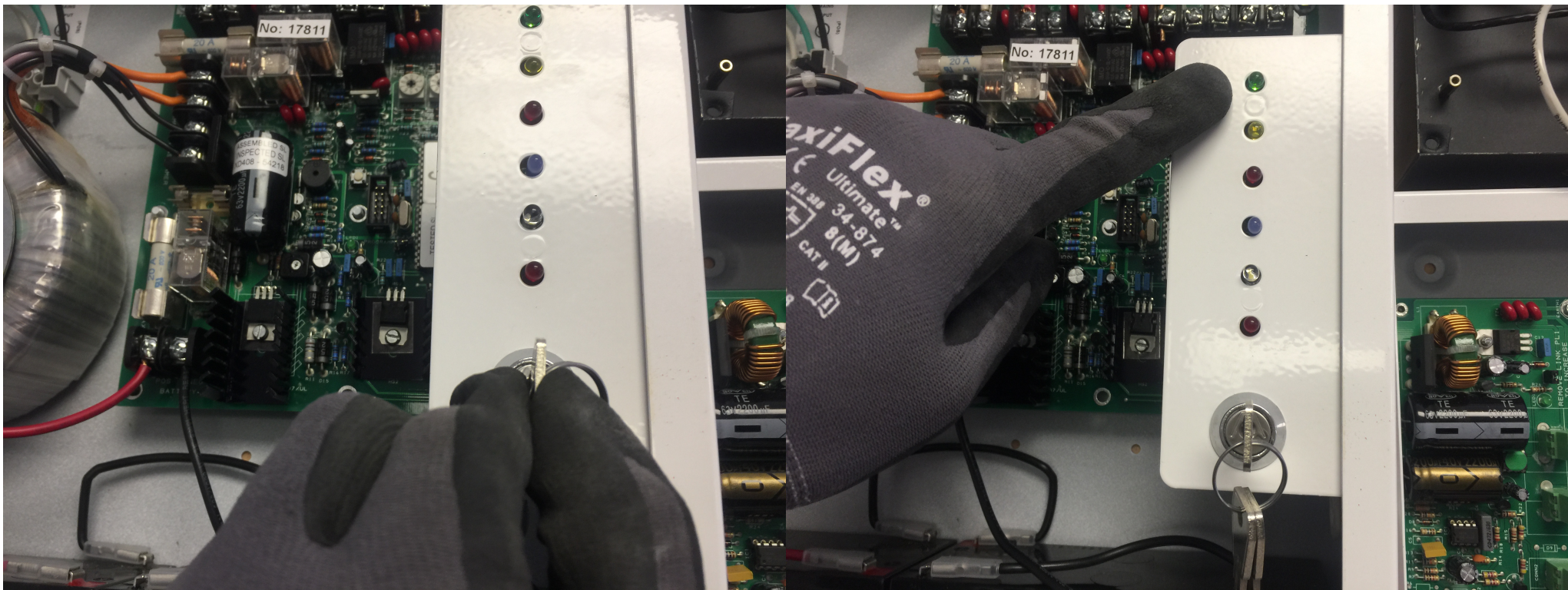
Step 10

Re Install the Positive Battery Terminal
Check to make sure the yellow light stops blinking



Step 11

Turn the key to back to the 12 o'clock position
The Red light turns off
The Curtain Rises
Only the Green Normal light should be illuminated



Step 12

Remove the key and make sure the GCP is screwed closed



Do not leave the key on site!

Step 13



Go to MCC and confirm all covers are installed

Step 14

Unit Commissioning Complete

Go to the next GCP and repeat from **Step 1**

Step 15

Once all GCP have been tested ask the general contractor to conduct smoke magnet test to confirm the Fire Alarm connectivity

Use a camera and picture of this and please put it in the commissioning file

Step 16

Give the Site Superintendent the Acknowledgement of Commissioning form for signing, if they refuse to sign it then the smoke curtain tech is responsible for signing under the general contractors name and giving the form to the General Contractor to confirm the job is finished.



U.S. SMOKE & FIRE
PROTECTING THE PEOPLE®